



THE ROSE 1672



TRADITIONAL



CRAFTSMAN



"THE ROSE"

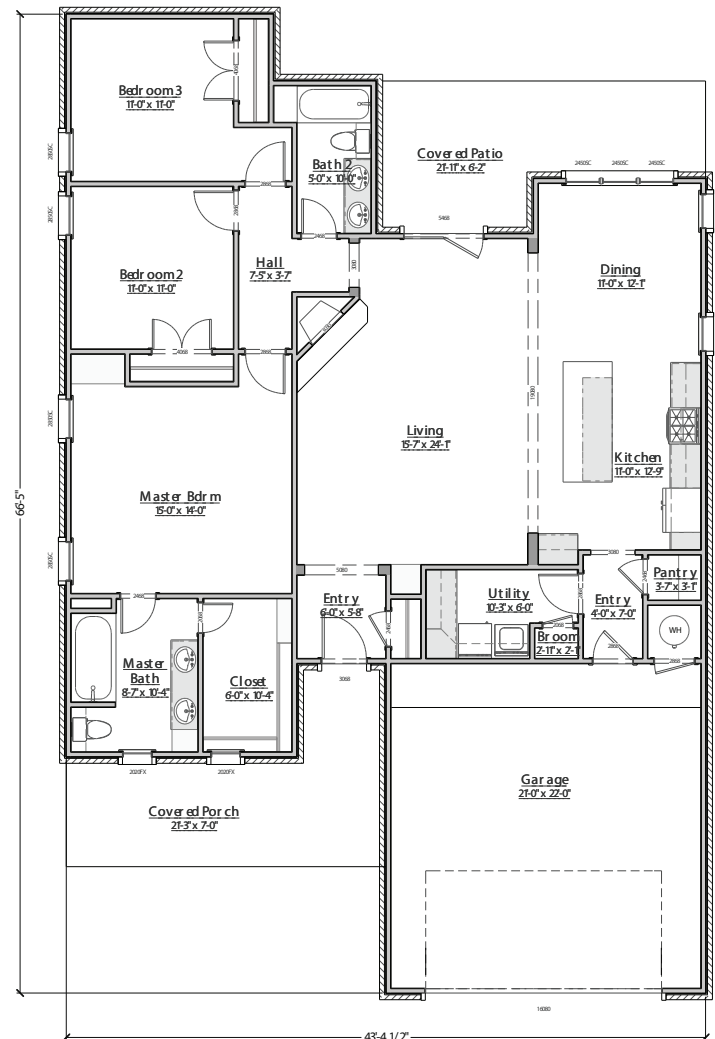
1672 sq. ft.,

Standard Plan/Elevation Includes:

- 3 bedrooms/2 baths, 1672 sf
- Covered front/back porches
- Open living concept
- Fireplace
- Granite Countertops in Kitchen
- Sprinklers/Sod

Upgrade Options Include:

- Divided light or craftsman front door unit
- James Hardie Fiber cement siding/soffit/and fascia
- Carriage house garage door
- Decorative cedar pillar/beam at front porch
- Vinyl plank flooring throughout common areas
- Tile shower surrounds
- Upgraded fixture package for both plumbing and lighting
- Upgraded appliance package
- Security prewire
- Additional Landscaping (Tree/Shrubs)



LIVING AREA
1672 sq. ft.